

Beam & Girder Clamps



Model F - Beam Grabs



PRODUCT FEATURES:

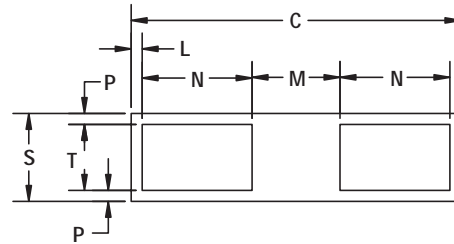
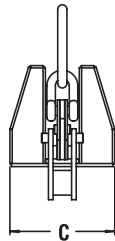
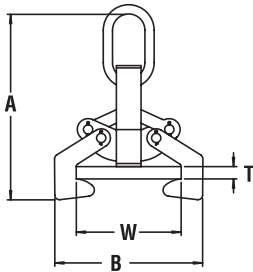
- Heavy duty design.
- These grabs provide an efficient method for handling wide flange beam sections and plate girders.
- Clamps have a recessed base to accept studs welded to a beam's surface.
- Beam grabs eliminate the need for slings, chokers and spreader bars.
- Designed and manufactured to ASME B30.20
- For longer beams or girders, use units in pairs in conjunction with a spreader/lifting beam.

SPECIFICATIONS

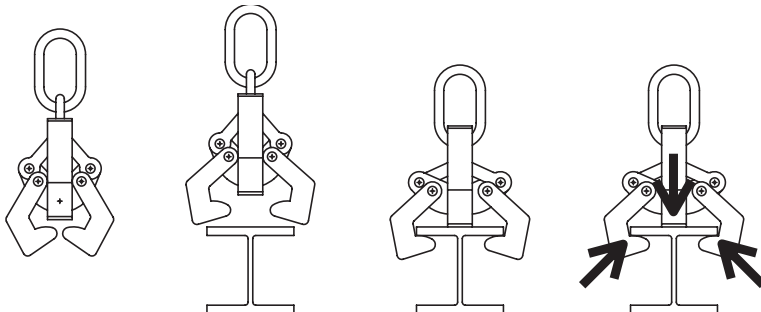
Base Dimensions

Models have bases cut out to avoid interference of studs.

Model Number	Rated Cap. tons	Dimensions in Inches													Weight (lbs)
		A	B	C	Flange Width	Flange Thickness		S	C	N	T	M	L	P	
						Min.	Max.								
F-5	5	22.7	15.7	11.6	4	1/4	1/4	3	11.6	3	2	4.6	.5	.5	68
					5	1/4	3/8								
					6 - 10	1/4	1								
F-15	15	30.1	25.1	17	7	1/2	3/4	4	17	4	2.5	7.3	.9	.8	182
					8	1/2	1								
					9	1/2	1-1/4								
					10	1/2	1-1/2								
					11 - 17	1/4	2								
F-25	25	44.8	45.2	24.3	16 - 17	1-1/4	3	5-1/2	24.3	6	4	9.8	1.3	.8	581
					18 - 24	1	3								
F-35	35	52.9	61.6	28.5	16 - 18	2-1/4	4	6	28.5	9.3	4-1/2	8.5	.8	.8	841
					20 - 22	2	4								
					24	1-3/4	4								
					1-1/4	4									
					28 - 36	1	4								



Operation



Lower grab onto the beam and, if necessary, lift tong arms to allow them to slide under flanges of the beam. When the clamp is lifted, its center plate and gripping tongs work against each other... the heavier the beam, the greater the clamping pressure.



WARNING!

Decreasing the load by bumping or substantial imbalance can, under certain circumstances, loosen the grip. Do not use on flange widths less than those specified on the name plate.