

# Fall Protection

Guardrails, anchoring points and steel cables

**Ace Crane Service, Inc**  
**800-562-9840**  
**sales@acecrane.com**

***XSPlatforms***<sup>®</sup>

# WORKING SAFELY AT HEIGHT ACCORDING TO XSPLATFORMS

Working at height is risky, but you get used to it. At relatively modest heights, people feel quite comfortable and often underestimate the risks. This results in hundreds of preventable accidents every year: often with injuries, sometimes fatal. Adequate fall protection is therefore a must for both the person working at height as well as his customer.

No matter which type of fall protection you choose, every XSPlatforms solution rests on a number of crucial requirements:

## RELIABLE

The Engineering department at XSPlatforms is the first in the industry to be certified by the TÜV quality institute and authorized to perform CE-testing. Every step of the product life cycle, from design through maintenance, is performed according to certified procedures. Each product receives a unique serial number for quality assurance as well as traceability.

## PRACTICAL

The more user-friendly fall protection equipment is, the more the user can focus on the work at hand without being distracted. The opposite is also true: a poorly designed system increases the temptation to not use the safety equipment. A good, practical design is therefore essential to both productivity as well as safety.

## UNIVERSAL

Fall protection systems from XSPlatforms can be mounted on robust or even extremely fragile rooftops, on any type of surface (wood, steel, concrete and any roofing material) and using any seal material (plastic or bitumen). There are even solutions for installations on walls or ceilings. Intelligent product innovations ensure that all systems can be installed quickly and easily.

## DURABLE

A good fall protection system is durable. In every way. That means: low-maintenance and produced using durable materials. XSPlatforms uses aluminum and stainless steel in all its products. Its systems are designed to ensure rooftops and roofing materials sustain little or no damage during installation and inspection, or even in the event of a fall.



Fall protection is available in various forms. XSPlatforms offers a complete range of innovative products. A custom solution combining an optimal balance between price and user-friendliness can be created for any building. Always with absolute certainty that the fall protection will operate correctly, safely and reliably.

## ATTRACTIVE DESIGN    EFFICIENT

The primary purpose of fall protection is safety and practicality. However permanent fall prevention, guardrails in particular, also have an impact on the appearance of a building. Solutions from XSPlatforms are designed not to detract from the architectural value of a building – and in some cases, even accentuate it.

Innovation is often found in what appear to be small details. Thanks to intelligent, well thought-out designs, fall protection products from XSPlatforms are efficiently packaged and require very little room during transport and storage. Once installed, they are low-maintenance, easy to inspect and, if required, simple to replace.

# CUSTOM SOLUTIONS

Various total solutions can be developed using the fall protection products offered by XSPlatforms. From the highest possible level of protection with maximum freedom of movement to a simple system that meets all requirements but requires more user knowledge: a custom solution for every building and every situation.



## FIVE CLASSES OF FALL PROTECTION



### MAXIMUM, PERMANENT PROTECTION

Installing guardrails allows the entire roof top to be accessed safely without the need for extra precautions or personal protection equipment. The user does not need to be knowledgeable in fall protection systems.

Standard: EN 13374 -  
Temporary Protection for  
Class A static loads.  
Number of users: unlimited.  
Suitable for all rooftops.



### PRACTICAL PROTECTION

A series of anchoring points, connected together by a steel cable, form a permanent steel cable path that follows the contour of the roof edge. The user remains permanently attached to the line while maintaining optimal freedom of movement on both sides of the steel cable. Because the steel cable path is located at a fixed distance from the roof edge, the length of the lanyard only needs to be adjusted once.

Standard: EN 795, class C.  
Number of users: 2 persons per  
steel cable path (possibly more  
depending on the parameters  
such as the height, span,  
length and the number of  
curves).  
Suitable for all rooftops.



### PRACTICAL AND ECONOMICAL PROTECTION

Two or more anchoring points, connected together through a permanent steel cable system. The user attaches himself to the steel cable using a 'traveler' and then has optimal freedom of movement providing the lanyard is set to the correct length.

Standard: EN 795, class C.  
Number of users: 2 persons per  
steel cable path (possibly more  
depending on parameters such  
as the height, span, length and  
the number of curves).  
Suitable for rooftops with a  
maximum width of 16 meters  
(52.49 ft).



### ECONOMICAL PROTECTION

This system includes a number of different anchoring points attached to the roof at a maximum distance of 6 meters (19.69 ft) from each other and approximately 4 meters (13.12 feet) from the roof edge. The user attaches himself to one of these anchoring points using a lanyard.

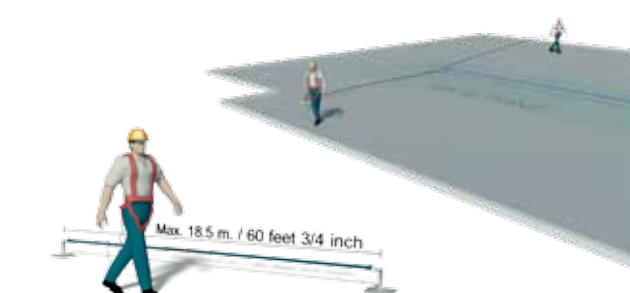
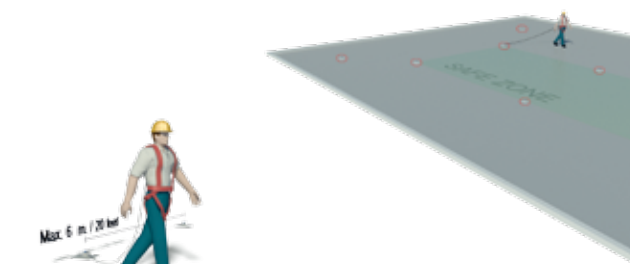
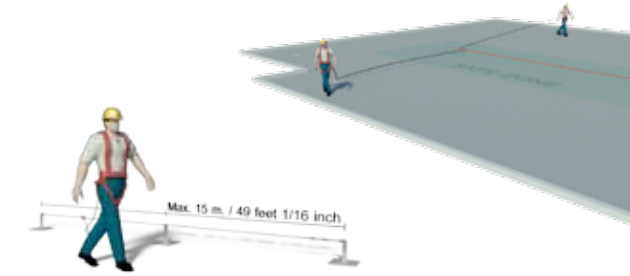
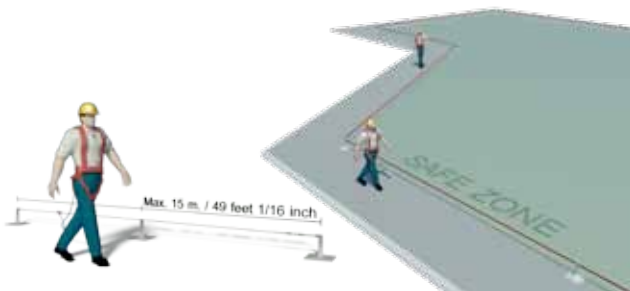
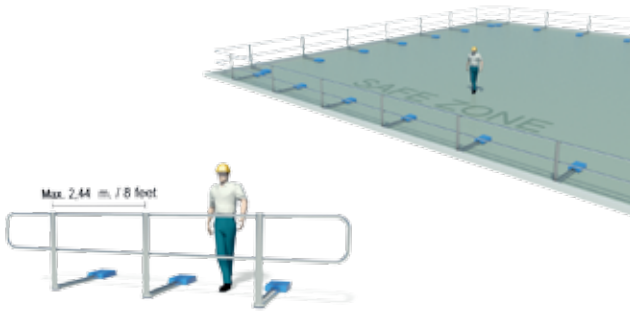
Standard: EN 795, class A.  
Number of users: 1 to 2  
persons per anchoring point  
(depending on the type).  
Suitable for rooftops with  
a width of 8 meters (26.25 ft)  
or more.



### MINIMUM REQUIRED PROTECTION

This solution consists of a minimum of two permanent anchoring points attached by a temporary, portable lifeline. The user attaches himself to this portable lifeline using a lanyard. An affordable solution which requires the user to have the necessary knowledge.

Standard: EN 795, class A, B  
or C (depending on use).  
Number of users: 2 persons  
per portable lifeline.  
Suitable for rooftops with  
a width of 8 meters (26.25 ft)  
or more.



# GUARDRAILS

The highest degree of fall protection (five stars) is achieved using guardrails. A permanent, simple solution that ensures the safety of an unlimited number of people. In short: optimal protection for minimal effort.



## STRAIGHT AND CURVED

XTP-Guardrail is available as a 'straight' guardrail and in a curved version. The curved designs provide extra safety (by keeping people further from the roof edge) and, thanks to their attractive design, can accentuate the architectural design of the building.

## COLLAPSIBLE

Maximum protection with minimal impact on the architectural design: the straight guardrails in the XTP-Guardrail series are also available in a collapsible version, making them only visible when the work is actually being completed.

The horizontal elements of the guardrails can be installed permanently using a special click system. A special clip (shown here) is also available for temporary railings which allows easy disassembly of the various elements. This makes the system an ideal fall protection solution for temporary sites such as building areas.

## FREE STANDING

XTP-Guardrails stand freely and therefore do not need to be attached to the roof structure. The long stand bases and concrete counterweights keep the system securely in place. This minimizes the risk of leaks and moisture penetration.

## INTEGRATED TOE PLATE

For flat roof buildings, the XTP-Guardrail can be easily equipped with an integrated toe plate to, for example, prevent materials from rolling or sliding off the roof.



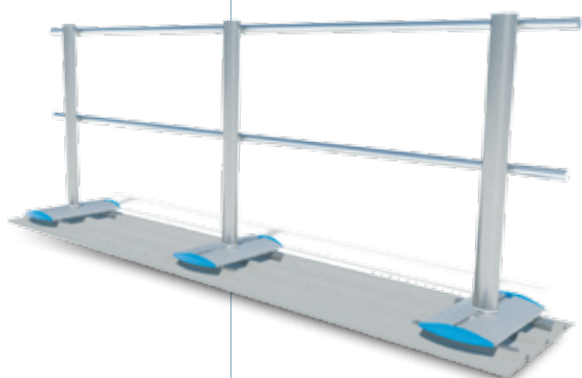


## EASY TO INSTALL

Two people can install 250 to 300 meters (820 to 984 ft) per day. Because the components 'click' into place, practically no tools are required - just one special wrench is all that is necessary. The same is true for the horizontal elements which are clicked into place from above instead of passed through the stands from the side. This increases the safety for the workers installing the system.

## ALSO SUITABLE FOR UPRIGHT AND FLAT ROOF EDGES

The XTP-Guardrail is available with stands for mounting to the facade or on the parapet of roofs with upright eaves such as flat roofs.



Because the system does not need to be attached to the roof, it is suitable for any surface type. And – with the help of a special profile – on any type of roofing material. The profiles are cut to size by the distributor and can therefore always be delivered quickly.

**Ace Crane Service, Inc**  
**800-562-9840**  
**sales@acecrane.com**



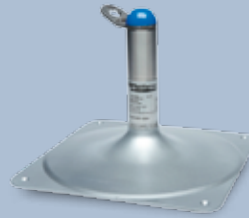
**XTS-Globe**

Suitable as a stand-alone anchoring point equipped with a 360SDgr swiveling safety eye.



**XTS-Impact**

Suitable as an anchoring point in an XTS-Linked steel cable path, equipped with an integrated fall arrestor.



**XTS-Impact 360°**

Suitable as stand-alone anchoring point, equipped with an integrated fall arrestor.



**XTS-Linked**

Steel cable path, to be used in combination with XTS-Impact.

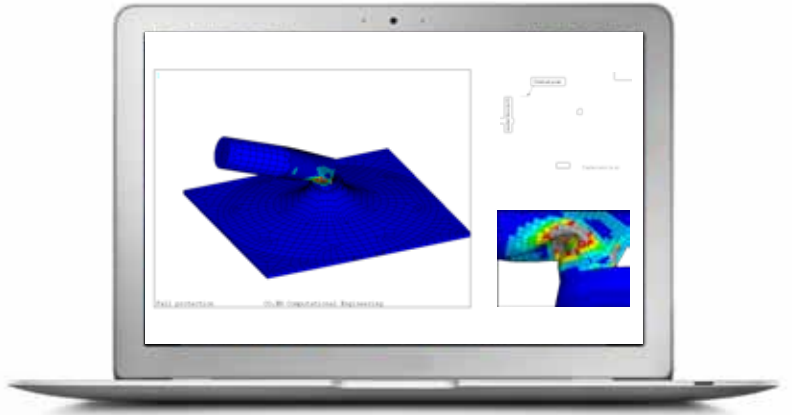
# ANCHORING POINTS AND STEEL CABLES

Fall protection systems from XSPlatforms that qualify for one to four stars use various combinations of anchoring points and steel cables. The XTS-product line includes three types of anchoring points and a steel cable system to achieve custom solutions.





Computer animation shows how the intelligent reaction mechanism bends in the direction of the fall to absorb the shock. The picture below shows this effect in practice.



### INTEGRATED FALL ARREST

The XTS-Impact and XTS-Impact 360SDgr anchoring points contain an intelligent reaction mechanism that bends in the direction of the fall to absorb the shock. This fall arrestor allows the XTS-Linked steel cable path to bridge greater distances between two anchoring points and requires fewer anchoring points over the entire path.

### QUICK INSTALLATION

The three anchoring points in the XTS-series utilizes a separate base plate that is fastened directly to the roofing material with just one anchor. This results in installations times that are four to five times faster than standard systems. The system is also perfect for activities which are completed quickly such as inspections, cleaning or small-scale repairs.

### MAXIMUM PROTECTION OF THE ROOF CONSTRUCTION

The integrated fall arrestor in the XTS-Impact and XTS-Impact 360SDgr ensures that even extremely light and fragile roof constructions sustain only slight or no damage in the event of a fall.

### UNIVERSAL APPLICATION

XTS-anchoring points can be used on all roof types thanks to the high absorption properties of the fall arrestor. Installation kits are available for a wide range of roofing materials. The profiles used in the kits are cut to size by the distributor and therefore always available for quick delivery.

### EASY TO INSPECT

All XTS-anchoring points can be inspected at any time, both visually as well as through a pull-test (without activating the anchoring point). The strength of the attachment in a concrete roof can be easily verified without disassembling the anchoring point.

### EASY TO REPAIR

After a fall, the anchoring point must be replaced. Thanks to the separate base plates (which are usually not damaged by a fall and therefore do not need to be replaced) this is simple, relatively inexpensive and does not cause damage the roof.

### OPTIMAL FREEDOM OF MOVEMENT

The XTS-Slider is a 'traveler' or glider that moves smoothly along the cable as well as past cable holders and through curves on both sides of the steel cable path. All while the user remains securely attached to the cable. Result: the ability to work safely without restrictions.

### REVOLUTIONARY PROTECTION

Anchoring systems from XSPlatforms not only satisfy all necessary safety standards and regulations, thanks to apparently small but significant innovations, XSPlatforms continues to raise the bar. An example: steel cables must be regularly examined to determine if the cable is still connected over the entire length of the 'terminal' and has not gradually shifted. The XTS-Linked system is equipped with a visual indicator that allows this critical point to be controlled in the blink of an eye.

**Ace Crane Service, Inc**  
**800-562-9840**  
**sales@acecrane.com**



## ALSO ALONG CEILING AND WALLS

Fall protection is not only required when working on rooftops. There is also often work to be done at height within the walls of a building. The XTS-Linked Wall and Ceiling systems offers users optimal safety and freedom of movement.

The XTS-Linked Wall and Ceiling system allows a steel cable path to be installed along a wall or ceiling. The system includes a beginning and an end plate, support plates and one or more separate XTS-Dynamic fall arrestors.

The XTS-Dynamic fall arrestor is attached between the steel cables and the anchoring points to reduce the load that occurs during a fall by approximately 60%. It also eliminates the need for a separate arrestor (as part of the personal fall protection) in up to 95% of cases.



## About XSPlatforms

---

XSPlatforms develops revolutionary solutions for working at height safely and efficiently. From design and production, to installation, inspection and maintenance of systems for facade access. From its branches in Western Europe, Asia, the Middle East and North America, XSPlatforms also provides training for users, risk inventories and worldwide consultancy services.



**Ace Crane Service, Inc**  
**800-562-9840**  
**[sales@acecrane.com](mailto:sales@acecrane.com)**

What sets XSPlatforms' solutions apart is their attractive, durable design, their high level of reliability, their unprecedented ease of use and their practical innovations. Our portfolio includes:

---

### FALL PROTECTION

Permanent fall protection in the form of guardrails and portable fall protection using anchors and steel cable systems. We have solutions for every situation and every building. Solutions that combine safety with freedom of movement, ease of use, rapid assembly and minimum damage to roofs.

---

### FACADE MAINTENANCE EQUIPMENT

Innovative solutions for facade maintenance installations. From compact, space-saving roof cars to the largest roof car in the world. We also produce gondolas that provide users with optimum protection from the elements, wireless communication between gondola and roof car, and advanced monitoring with PLC technology.

---

### SUSPENDED PLATFORM SYSTEMS

Innovative suspended platform systems that excel in terms of ease of use, assembly, safety, transport, distribution and storage. Fully designed by XSPlatforms, our systems are based on a modular concept with folding platforms and multifunctional hoist units.

---

### SCAFFOLDING SYSTEMS

Scaffolding systems that are easier and safer to erect than anyone thought possible. Systems that combine the advantages of scaffold towers and walk-through scaffolding, while providing users with optimum flexibility and safety.

**Ace Crane Service, Inc**  
**800-562-9840**  
**sales@acecrane.com**



---

*The Netherlands (HQ) - Europe, Asia, Middle-East and North-America*

**info@xsplatforms.com** | **2.1**

---